

Your Plenty Valley routes

Route	Route name
381	Mernda Station to Diamond Creek Station via Doreen <i>(Previously Diamond Creek to South Morang Station)</i>
382	Whittlesea to Northland SC
383	Palisades to University Hill
384	Kinglake to Whittlesea via Humevale
385	Whittlesea/Mernda Station to Greensborough <i>(Previously Whittlesea/Mernda North to Greensborough)</i>
386	Mernda Station to Bundoora RMIT via Cravens Rd and South Morang <i>(Previously Mernda North to Bundoora RMIT via Cravens Rd and South Morang)</i>
387	Mernda Station to Bundoora RMIT via Hawkstowe Pde <i>(Previously Mernda North to Bundoora RMIT via Hawkstowe Pde and South Morang)</i>
New route	Route name
388	Mernda Station to Mernda Station via Doreen <i>(anti-clockwise)</i>
389	Mernda Station to Mernda Station via Doreen <i>(clockwise)</i>

The new Route 388 and 389 loop services will go around Mernda and Doreen linking Laurimar Town Centre, Mernda Village Shopping Centre and Mernda Station.

! Routes 385, 388 and 389 will have a minor route change in Mernda and Doreen while works on Wallaroo Way and Painted Hills Road are finished. Once works are completed, routes 385, 388 and 389 will travel along the new routes as planned.

The find out more visit ptv.vic.gov.au

For more information visit ptv.vic.gov.au or call 1800 800 007.

If you are deaf, or have a hearing or speech impairment, you can contact us directly or through the National Relay Service and request to call 1800 800 007.



For information in other languages:

普通話	9321 5454	廣東話	9321 5441
Italiano	9321 5444	ਪੰਜਾਬੀ	9321 5445
Ελληνικά	9321 5443	हिन्दी	9321 5442
Việt-ngữ	9321 5449	සිංහල	9321 5446
عربي	9321 5440	Español	9321 5447

If your language isn't listed visit ptv.vic.gov.au/languages or call 9321 5450.

Authorised by Transport for Victoria, 1 Spring Street, Melbourne.

Bus, meet train.

From Sunday 26 August we're changing the Plenty Valley bus network, connecting you to three new stations on the Mernda Line.



PTVH2902/18



From Sunday 26 August, we're changing the Plenty Valley bus network to give you better connections with trains on the new Mernda Line.

Buses will connect to three new stations at Middle Gorge, Hawkstowe and Mernda, with close to a thousand train services running each week.

What's changing?

- New route 388 and 389 loop services added, connecting you to Mernda and Doreen
- New timetables
- Bus routes
- Route names
- Stop locations

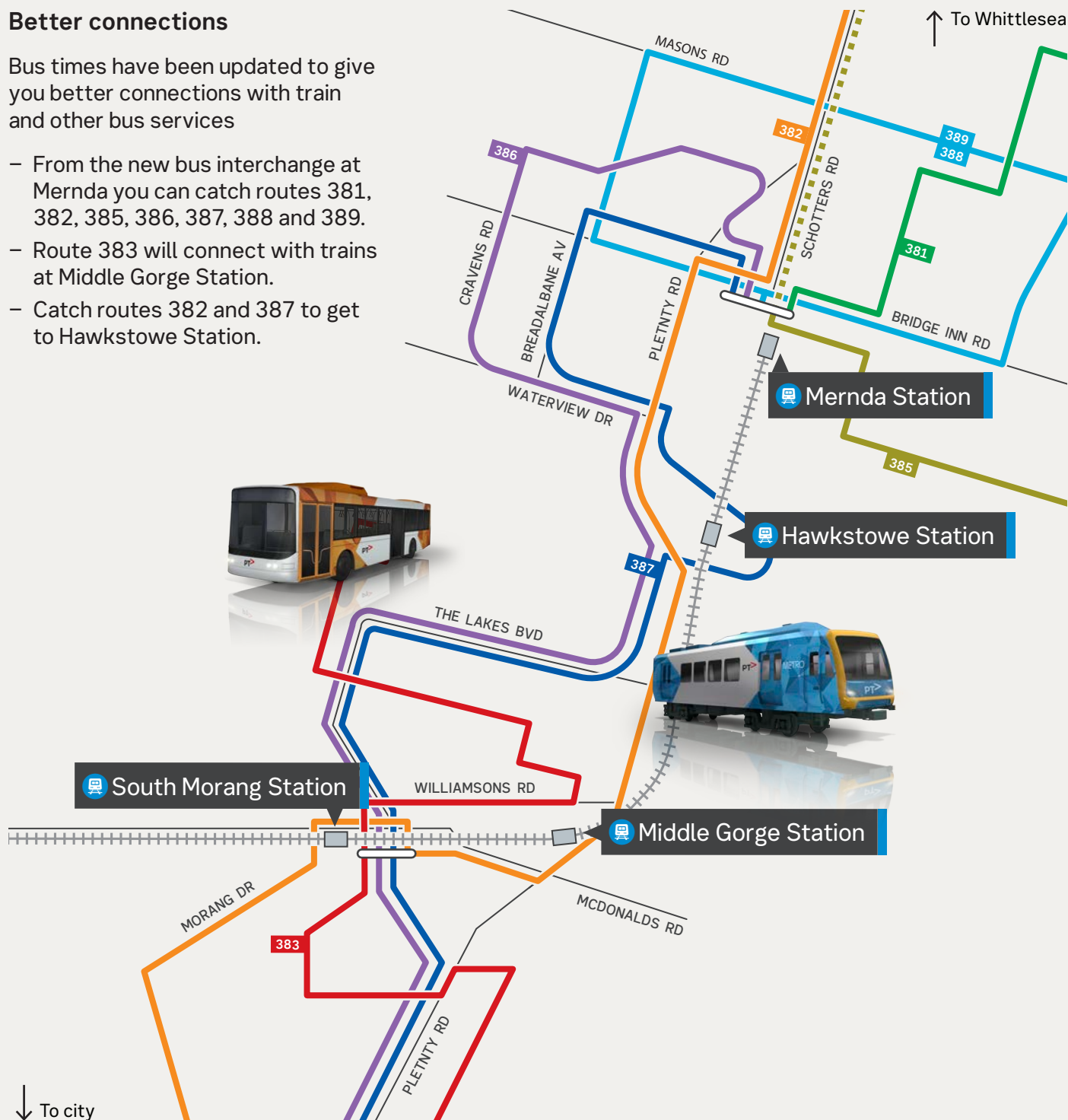


Some routes have changed. Use the network map in this brochure to find the most suitable route for you or plan your journey at ptv.vic.gov.au

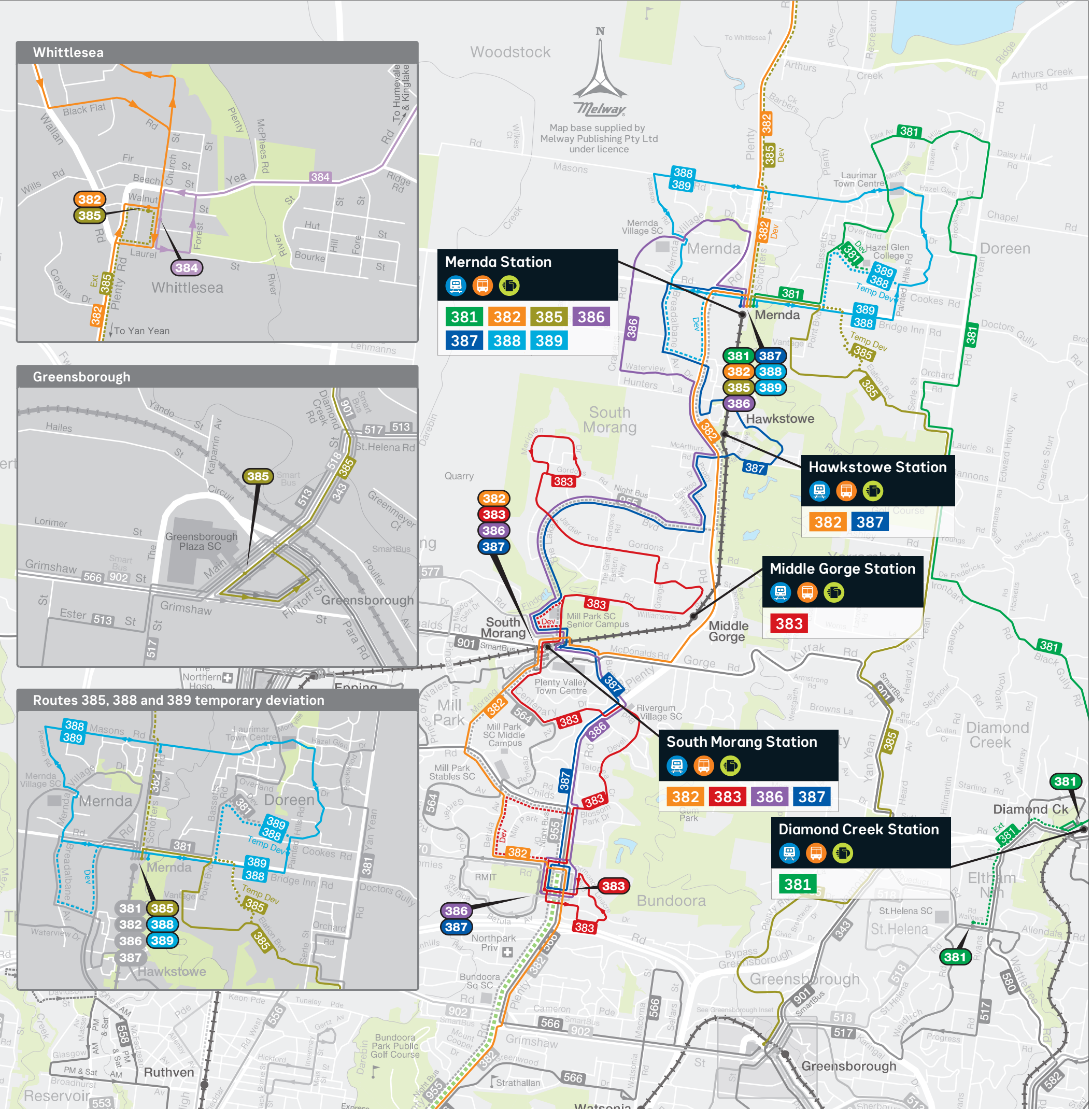
Better connections

Bus times have been updated to give you better connections with train and other bus services

- From the new bus interchange at Mernda you can catch routes 381, 382, 385, 386, 387, 388 and 389.
- Route 383 will connect with trains at Middle Gorge Station.
- Catch routes 382 and 387 to get to Hawkstowe Station.



New Plenty Valley bus network map from Sunday 26 August 2018



The Plenty Valley routes

Route	Description
381	Mernda Station to Diamond Creek Station via Doreen (Previously South Morang Station to Diamond Creek Station via Doreen)
382	Whittlesea to Northland SC
383	Palisades to University Hill
384	Kinglake to Whittlesea via Humevale
385	Whittlesea/Mernda Station to Greensborough (Previously Whittlesea/Mernda North to Greensborough)

Route	Description
386	Mernda Station to Bundoora RMIT via Cravens Rd and South Morang (Previously Mernda North to Bundoora RMIT via Cravens Rd and South Morang)
387	Mernda Station to Bundoora RMIT via Hawkstowe Pde (Previously Mernda North to Bundoora RMIT via Hawkstowe Pde and South Morang)
New route	
388	Mernda Station to Mernda Station via Doreen (anti-clockwise)
389	Mernda Station to Mernda Station via Doreen (clockwise)

Key	
	Bus route
	Route number
	Train line
	Route 385 temporary deviation (26th August until further notice)
	Route 388/389 temporary deviation (26th August until further notice)
	Train connection
	Bus connection
	myki tickets available